

**SDHB Antibody (C-term)**  
**Affinity Purified Rabbit Polyclonal Antibody (Pab)**  
**Catalog # AP19974b**

**Specification**

---

**SDHB Antibody (C-term) - Product Information**

Application	WB,E
Primary Accession	<a href="#">P21912</a>
Other Accession	<a href="#">Q007T0</a> , <a href="#">Q9COA3</a> , <a href="#">Q3T189</a> , <a href="#">NP_002991.2</a>
Reactivity	Human
Predicted	Bovine, Mouse, Pig
Host	Rabbit
Clonality	Polyclonal
Isotype	Rabbit IgG
Calculated MW	31630
Antigen Region	205-234

**SDHB Antibody (C-term) - Additional Information**

**Gene ID** 6390

**Other Names**

Succinate dehydrogenase [ubiquinone] iron-sulfur subunit, mitochondrial, Iron-sulfur subunit of complex II, Ip, SDHB, SDH, SDH1

**Target/Specificity**

This SDHB antibody is generated from rabbits immunized with a KLH conjugated synthetic peptide between 205-234 amino acids from the C-terminal region of human SDHB.

**Dilution**

WB~~1:1000

E~~Use at an assay dependent concentration.

**Format**

Purified polyclonal antibody supplied in PBS with 0.09% (W/V) sodium azide. This antibody is purified through a protein A column, followed by peptide affinity purification.

**Storage**

Maintain refrigerated at 2-8°C for up to 2 weeks. For long term storage store at -20°C in small aliquots to prevent freeze-thaw cycles.

**Precautions**

SDHB Antibody (C-term) is for research use only and not for use in diagnostic or therapeutic procedures.

**SDHB Antibody (C-term) - Protein Information**

**Name** SDHB

## Synonyms SDH, SDH1

**Function** Iron-sulfur protein (IP) subunit of the succinate dehydrogenase complex (mitochondrial respiratory chain complex II), responsible for transferring electrons from succinate to ubiquinone (coenzyme Q) (PubMed:[26925370](#), PubMed:[27604842](#)). SDH also oxidizes malate to the non-canonical enol form of oxaloacetate, enol- oxaloacetate (By similarity). Enol-oxaloacetate, which is a potent inhibitor of the succinate dehydrogenase activity, is further isomerized into keto-oxaloacetate (By similarity).

## Cellular Location

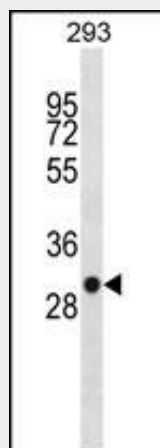
Mitochondrion inner membrane; Peripheral membrane protein; Matrix side

## SDHB Antibody (C-term) - Protocols

Provided below are standard protocols that you may find useful for product applications.

- [Western Blot](#)
- [Blocking Peptides](#)
- [Dot Blot](#)
- [Immunohistochemistry](#)
- [Immunofluorescence](#)
- [Immunoprecipitation](#)
- [Flow Cytometry](#)
- [Cell Culture](#)

## SDHB Antibody (C-term) - Images



SDHB Antibody (C-term) (Cat. #AP19974b) western blot analysis in 293 cell line lysates (35ug/lane). This demonstrates the SDHB antibody detected the SDHB protein (arrow).

## SDHB Antibody (C-term) - Background

Complex II of the respiratory chain, which is specifically involved in the oxidation of succinate, carries electrons from FADH to CoQ. The complex is composed of four nuclear-encoded subunits and is localized in the mitochondrial inner membrane. The iron-sulfur subunit is highly conserved and contains three cysteine-rich clusters which may comprise the iron-sulfur centers of the enzyme. Sporadic and familial mutations in this gene result in paragangliomas and pheochromocytoma, and support a link between

mitochondrial dysfunction and tumorigenesis.

#### **SDHB Antibody (C-term) - References**

Shimada, M., et al. Hum. Genet. 128(4):433-441(2010)  
Bailey, S.D., et al. Diabetes Care 33(10):2250-2253(2010)  
Cerecer-Gil, N.Y., et al. Clin. Cancer Res. 16(16):4148-4154(2010)  
Schimke, R.N., et al. Am. J. Med. Genet. A 152A (6), 1531-1535 (2010) :  
Hes, F.J., et al. BMC Med. Genet. 11, 92 (2010) :

#### **SDHB Antibody (C-term) - Citations**

- [Stable nuclear expression of ATP8 and ATP6 genes rescues a mtDNA Complex V null mutant.](#)
- [The effect of 3-bromopyruvate on human colorectal cancer cells is dependent on glucose concentration but not hexokinase II expression.](#)